



WWW.BARRYIND.COM

T50R0-120-18X



BeO

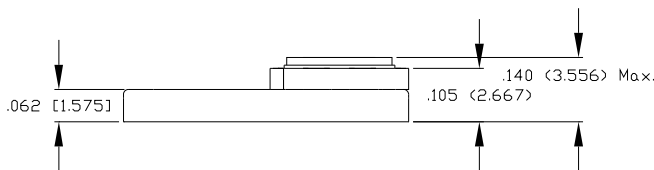
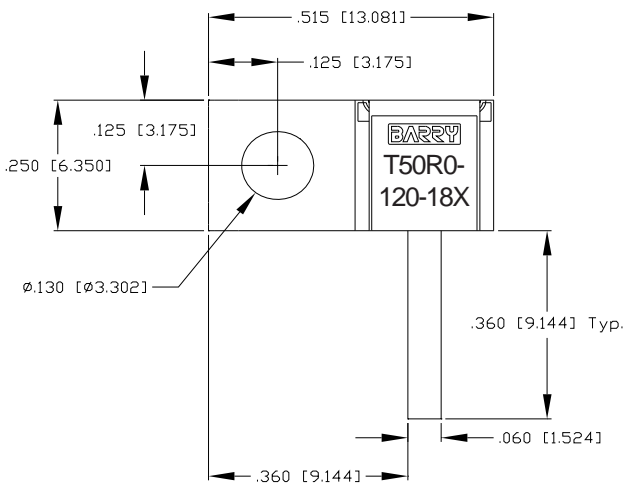
FLANGED TERMINATION

Features:

- ◆ BeO Material
- ◆ DC - 6 GHz Performance
- ◆ 120 Watt Input Power
- ◆ Flange Mount

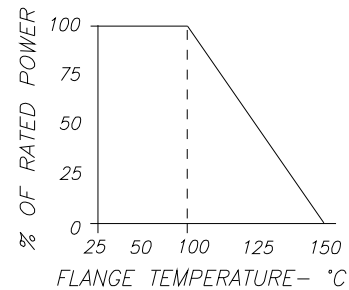
General Description:

The T50R0-120-18X is a flanged 50 ohm BeO termination. It has an input power rating of 120 watts, while maintaining a constant flange temperature of 100°C. It offers a frequency range from DC to 6 GHz.



Dimensions in inches [mm]
Tolerance \pm .010 [.254]
unless otherwise stated

DERATING CURVE:



Parameter	Min.	Typ.	Max.	Units
Frequency Range	DC		6	GHz
Input Return Loss	17			dB
Input Power			120	Watts
Resistance	47.5	50	52.5	Ohms
Flange Temperature			100	°C

Barry Industries reserves the right to change part number and or process without notification.

Barry Industries, Inc., 60 Walton St., Attleboro, MA 02703 T: 508-226-3350 F: 508-226-3317 E-mail: sales@barryind.com
Barry Industries maintains an ISO 9001 Certified Quality Management System

Origination Date	Revision Date	Rev.
08/14/12	08/14/12	-