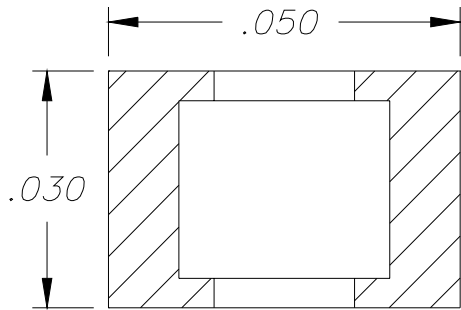


Alumina

FLIP CHIP RESISTOR

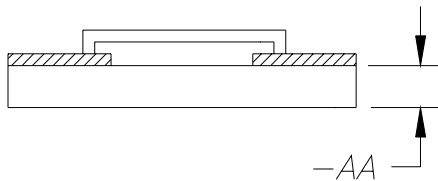
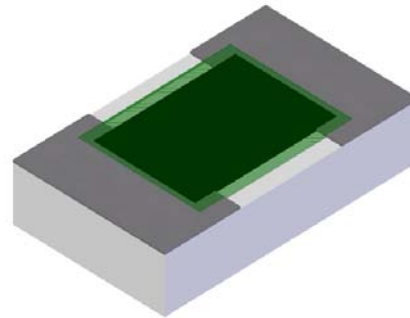
Features:

- ◆ Alumina material
- ◆ Flip Chip
- ◆ .15 Watt input power



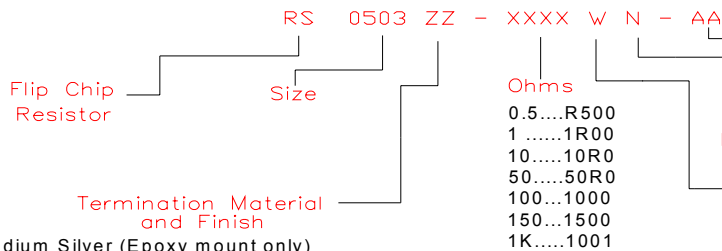
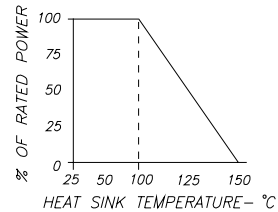
General Description:

The RS0503ZZ-XXXXWN-AA series is a flip chip resistor. It has an input power of .15 watts while maintaining a mounting surface temperature of 100°C. It offers a small package design available in Alumina. See below for ordering options.



Dimensions in inches
Tolerance $\pm .005$

DERATING CURVE:



Thickness, Material and Input power
 -90 - .010" Alumina .15 Watts
 -91 - .015" Alumina .15 Watts

- Termination Material and Finish
- BA - Palladium Silver (Epoxy mount only)
 - CB - Tin lead over nickel over silver (Solder mount only)
 - GA - Gold (Epoxy mount only, wire bond)
 - CT - Matte Tin over Nickel over Silver (Solder mount only)

- Ohms
- 0.5.....R500
 - 11R00
 - 10.....10R0
 - 50.....50R0
 - 100....1000
 - 150...1500
 - 1K.....1001
- (N)ormal Inspection
- Tolerance
- F - 1%
 - G - 2%
 - J - 5%
 - K - 10%
 - L - 20%
 - X - Special

* Barry Industries reserves the right to change part number and or process without notification

Origination Date	Revision Date	Rev.
09/11/07	09/11/07	-