

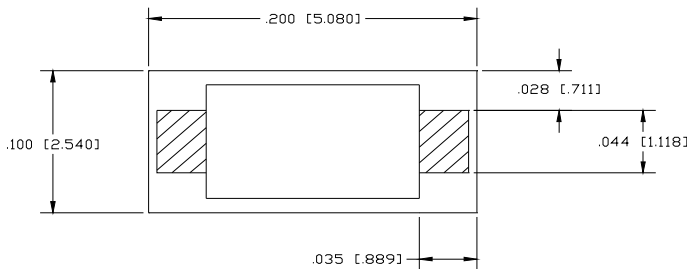
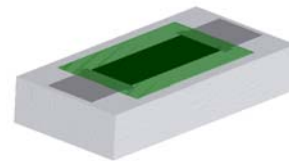
BeO CHIP RESISTOR

Features:

- ◆ BeO Material
- ◆ 40 Watt Input Power
- ◆ CT - Matte Tin over Nickel over Silver
- ◆ Solder Mountable

General Description:

The RM2010CT-XXXX*GN-99-02 is a BeO solder mountable chip resistor. It offers an input power of 40 watts, while maintaining a constant mounting surface temperature of 100°C. Its compact size is ideal for miniature electronic components.

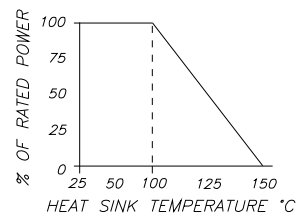


Dimensions in inches [mm]
Tolerance ± .005 [.127]
unless otherwise stated

* XXXX = Resistance Value in Ohms
.5 - 1Mohm available
Sample Part Number = RM2010CT-50R0GN-99-02

- Ohms
- 0.5....R500
 - 11R00
 - 10.....10R0
 - 50.....50R0
 - 100...1000
 - 150...1500
 - 1K.....1001
 - 10K...1002
 - 100K.1003
 - 470K.4703
 - 1M....1004

DERATING CURVE:



Parameter	Min.	Typ.	Max.	Units
Power			40	Watts
Resistance		+/- 2%		Ohms
Mounting Surface Temperature			100	°C

Barry Industries reserves the right to change part number and or process without notification.

Barry Industries, Inc., 60 Walton St., Attleboro, MA 02703 T: 508-226-3350 F: 508-226-3317 E-mail: sales@barryind.com

Barry Industries maintains an ISO 9001 Certified Quality Management System

Origination Date	Revision Date	Rev.
12/23/08	12/23/08	-