



WWW.BARRYIND.COM

# RM2010CT-1000GN-2T



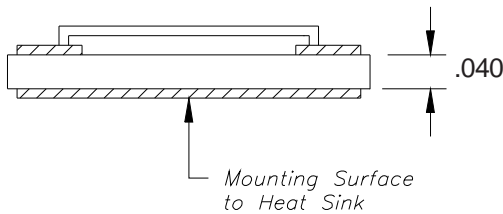
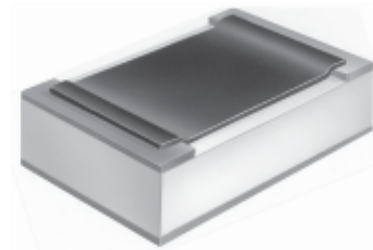
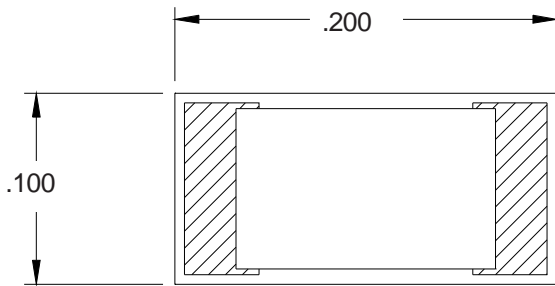
## Aluminum Nitride 100 Ohm CHIP RESISTOR

### Features:

- ◆ Aluminum Nitride Material
- ◆ 20 Watt Input Power
- ◆ Compact Construction
- ◆ CT - Matte Tin over Nickel over Silver

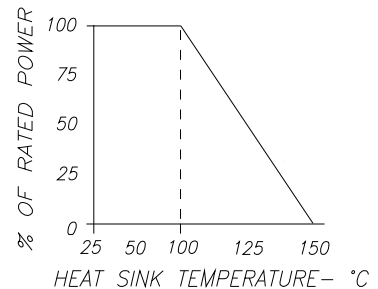
### General Description:

The RM2010CT-1000GN-2T is an Aluminum Nitride 100 ohm surface mount chip resistor with a input power rating of 20 watts while maintaining a mounting surface temperature of 100° C. Its compact size is ideal for miniature electronic components.



- All Dimensions in inches
- Tolerance  $\pm .005$

DERATING CURVE:



Parameter	Min.	Typ.	Max.	Units
Resistance Tolerance	49	50	51	Ohms
Input Power			20	Watts
Mounting Surface Temperature			100	°C

Barry Industries reserves the right to change part number and or process without notification

Barry Industries, Inc., 60 Walton St., Attleboro, MA 02703 T: 508-226-3350 F: 508-226-3317 E-mail: sales@barryind.com

Barry Industries maintains an ISO 9001 Certified Quality Management System

Orig. Date	Rev. Date	Rev.
02/01/06	05/20/10	A