

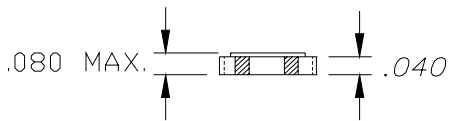
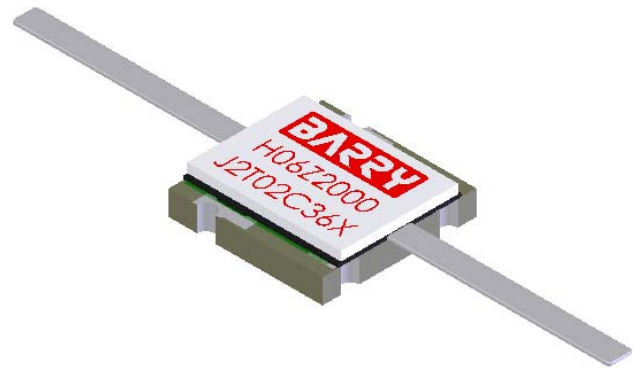
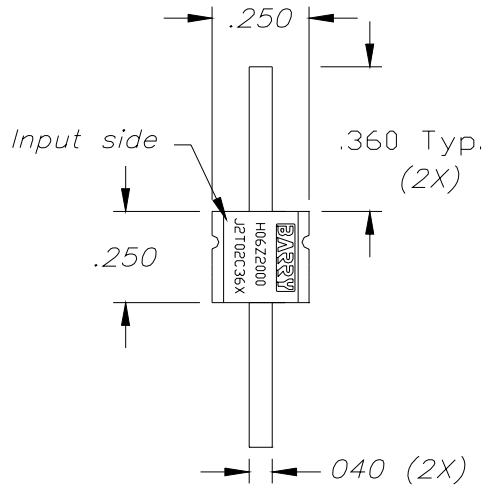
Aluminum Nitride 20 dB LEADED ATTENUATOR

Features:

- ◆ Aluminum Nitride Material
- ◆ DC - 4 GHz Performance
- ◆ 40 Watt Input Power
- ◆ Solder Mountable

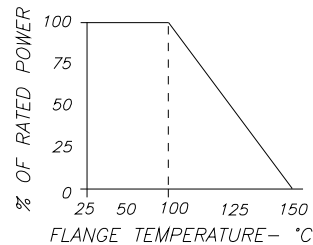
General Description:

The H06Z-2000J2T-02C36-X is a leaded Aluminum Nitride 20 dB attenuator. It has an input power of 40 watts, while maintaining a constant mounting surface temperature of 100°C. It offers a frequency range from DC to 4 GHz.



*Dimensions in inches
Tolerance ± .010
unless otherwise stated*

DERATING CURVE:



Parameter	Min.	Typ.	Max.	Units
Frequency Range	DC		4	GHz
Input Return Loss (DC-3 GHz) (3 - 4 GHz)	20 17			dB
Output Return Loss (DC-3 GHz) (3 - 4 GHz)	20 17			dB
Input Power			40	Watts
Mounting Surface Temperature			100	°C
Attenuation (DC - 3 GHz, +/- 1 dB) Attenuation (3 - 4 GHz, +/- 2 dB)	19 18	20 20	21 22	dB

Barry Industries reserves the right to change part number and or process without notification.

Barry Industries, Inc., 60 Walton St., Attleboro, MA 02703 T: 508-226-3350 F: 508-226-3317 E-mail: sales@barryind.com

Barry is ISO 9001:2000 Certified by



Origination Date	Revision Date	Rev.
02/19/08	03/05/08	A