

## BeO

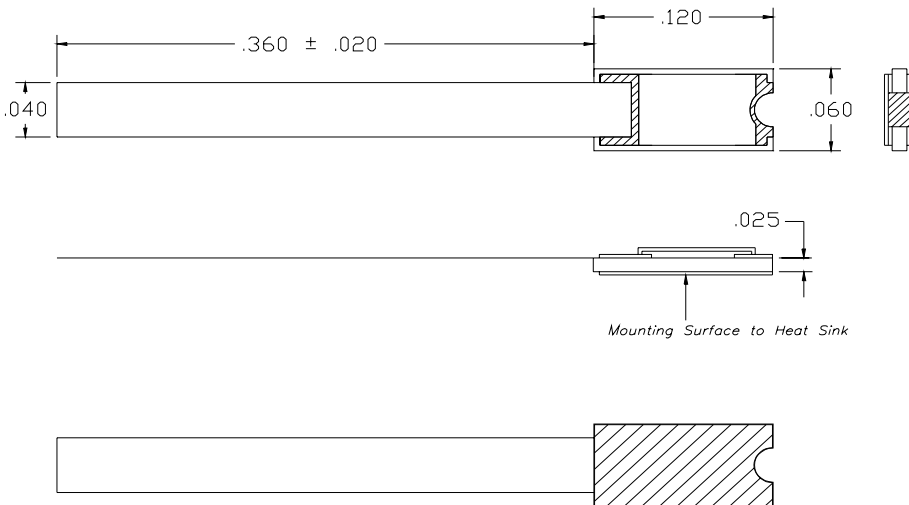
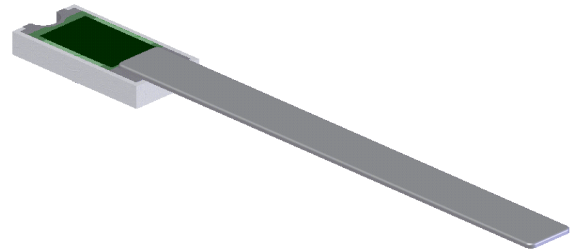
## LEADED TERMINATION

### Features:

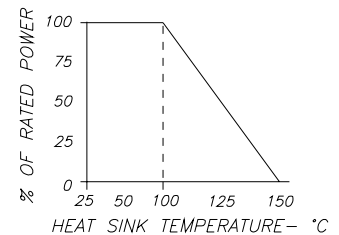
- ◆ BeO material
- ◆ DC-4 GHz performance
- ◆ 20 Watt input power
- ◆ Solder mountable

### General Description:

The B02Z-50R0J98-00C36-Y is a 50 ohm leaded BeO termination with an input power of 20 watts while maintaining a heat sink temperature of 100°C, and a frequency range from DC - 4 GHz.



DERATING CURVE:



Parameter	Min.	Typ.	Max.	Units
Frequency Range	DC		4	GHz
Input Return Loss	20			dB
Resistance	47.5	50	52.5	Ohms
Input Power			20	Watts
Heat Sink Temperature			100	°C

\* Barry Industries reserves the right to change part number and or process without notification

Barry Industries, Inc., 60 Walton St., Attleboro, MA 02703 T: 508-226-3350 F: 508-226-3317 E-mail: sales@barryind.com  
Barry Industries maintains an ISO 9001 Certified Quality Management System

Origination Date	Revision Date	Rev.
7/27/07	7/27/07	-