

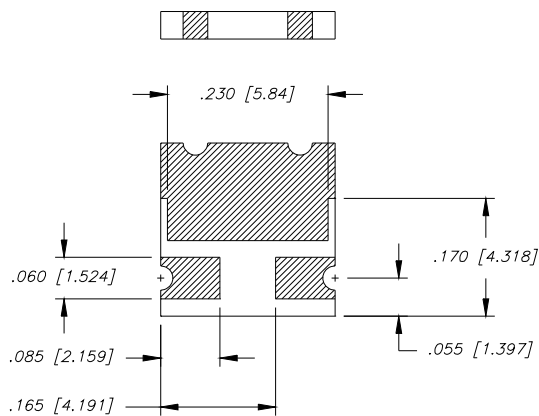
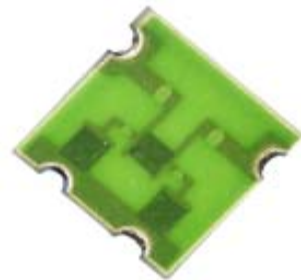
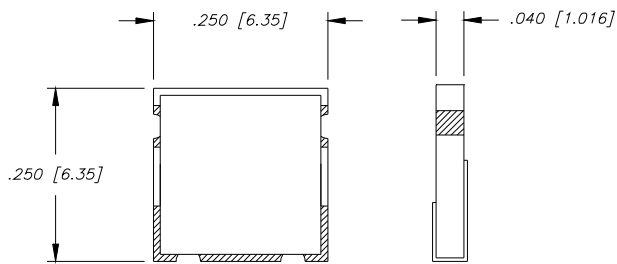
BeO 10dB CHIP ATTENUATOR

Features:

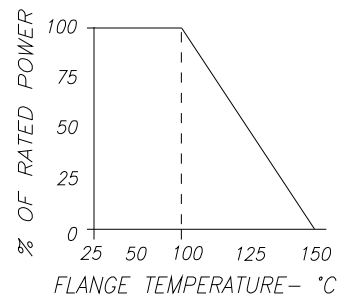
- ◆ BeO Material
- ◆ DC - 2 GHz Performance
- ◆ 30 Watt Input Power
- ◆ Solder Mountable
- ◆ CT - Matte Tin over Nickel over Silver

General Description:

The ATC2525CT-1000JN-99 is a 10 dB, BeO solder mountable chip attenuator. It has an input power of 30 watts, while maintaining a constant mounting surface temperature of 100°C. It offers a frequency range of DC to 2 GHz.



DERATING CURVE:



Parameter	Min.	Typ.	Max	Units
Frequency Range	DC		2	GHz
Attenuation	9	10	11	dB
Input Return Loss	20			dB
Output Return Loss	20			dB
Input Power			30	Watts
Mounting Surface Temperature			100	°C

Barry Industries reserves the right to change part number and or process without notification.

Barry Industries, Inc., 60 Walton St., Attleboro, MA 02703 T: 508-226-3350 F: 508-226-3317 E-mail: sales@barryind.com
Barry Industries maintains an ISO 9001 Certified Quality Management System

Origination Date	Revision Date	Rev.
03/12/08	01/16/13	A